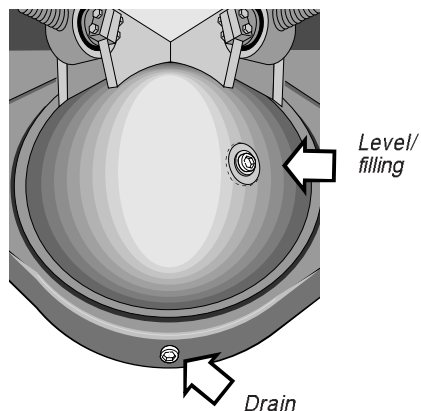


## Service and Maintenance

### Rear axle gear



#### Check oil level

Check the oil level at every basic service. Unscrew the level/filler plug when checking. The oil level should reach to the hole.

Use the same grade of oil for topping up.

**NB!** Check also that the rear axle gear ventilation is not blocked. This is essential to avoid leaks caused by over-pressure in the rear axle.

#### Oil change volume

Approx. 20 l.

#### Oil change interval for rear axle.

##### RAEV 80/85

Oil change when using  
Volvo 97312\* transmission fluid..... Max. 180,000 km

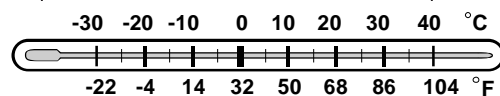
But at least once a year

Oil change when using  
standard oil ..... Max. 120,000 km

But at least once a year.

\* Part number 116 1949.

Temperatures refer to constant ambient temperatures.



SAE 80W/140

SAE 85W/140

SAE 140